

1002/472 Pacific Highway St Leonards, NSW

 1  1  1

Luxury 1 Bedroom 1 Bathroom 1 Car space

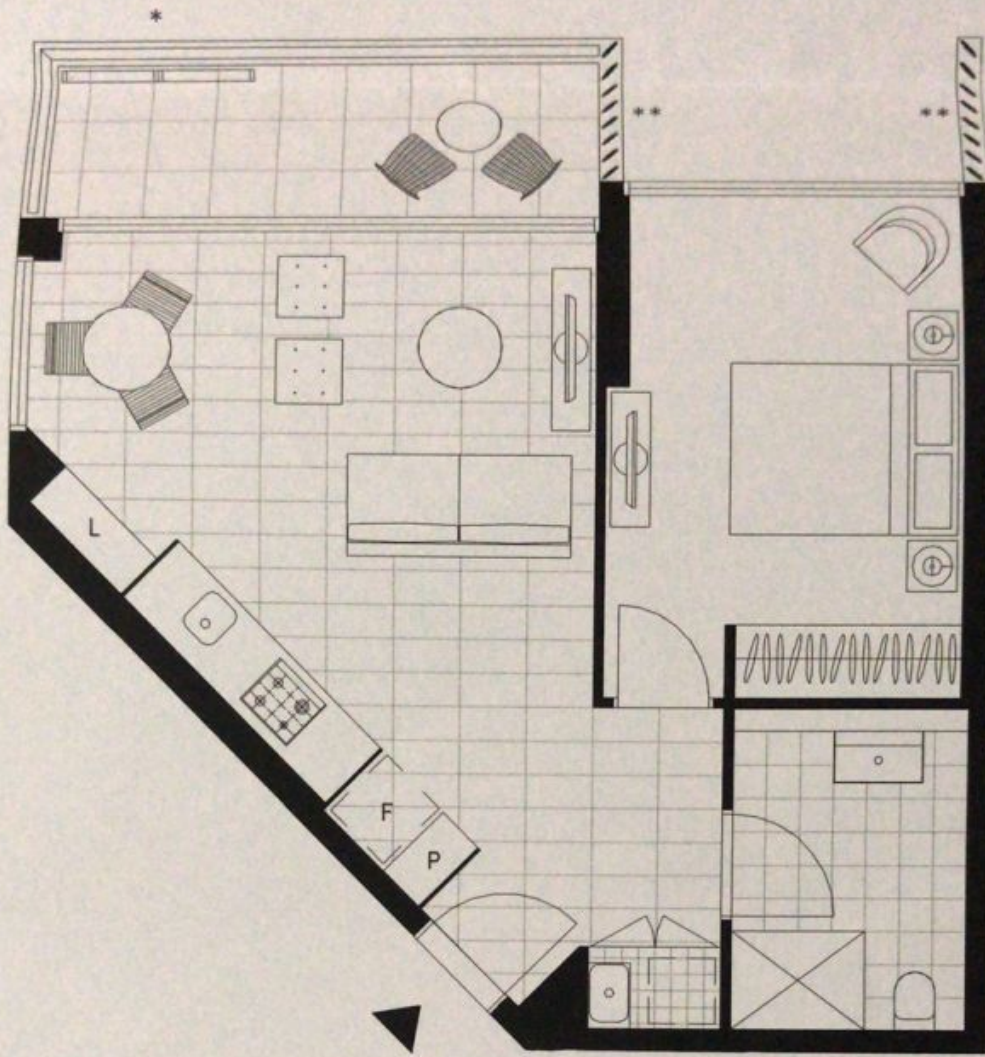
St Leonards Square exemplifies Mirvac's reputation for sophisticated living in Sydney. Close proximity to the Sydney CBD, leading schools, parks, shops, cafes, and dining. Literally 1-2 minutes walk to future metro station and only minutes walk to current St Leonards station. Minutes walk to future 30,000sqm of commercial and retail space. 10,000sqm for the shopping plaza, a major full-line supermarket that spans over 3000sqm and a brand new 1000sqm public library.

This 58 sqm, 1-bedroom apartment features:

- Oversized bedroom with built-in wardrobe
- Galley kitchen with stone bench-top and Miele appliances
- Ultramodern bathroom with plenty of storage
- Open-plan living and dining area

Lu (amy) Yin

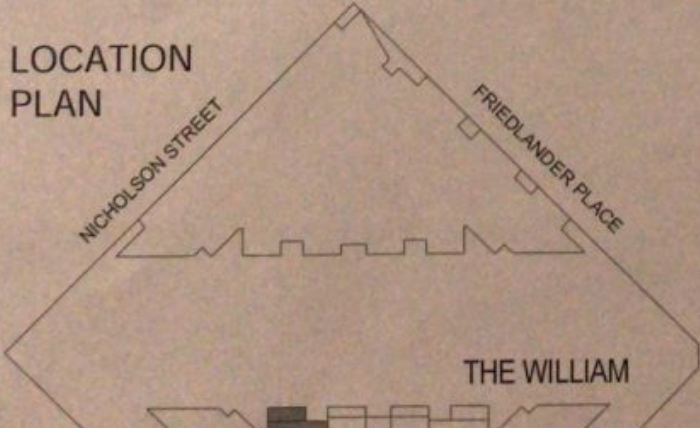
0403 524 018



LEVELS 10-13

57
68
79
90

LOCATION PLAN



THE WILLIAM
1 BEDROOM APARTMENT

Internal Area	50 m ²
Balcony Area	8 m ²
Total Area	58 m ²

Areas subject to final survey, area includes balcony and/or terrace where applicable. It excludes parking and external storage areas.