



86 Eather Avenue Bardia, NSW



4



2



2

## Near New House in Heart of Bardia

Located in the heart of sought-after suburb of Bardia, perfect for young or mature families looking to purchase a new home in a growing area within just stone's throw away from schools, parklands, train station and Ed square town center which features supermarkets, cinema, restaurants and much more.

This near new fabulous family home offers 4 spacious bedrooms all with built in wardrobe and ensuite to the main.

Contains two full bathrooms and one powder room.

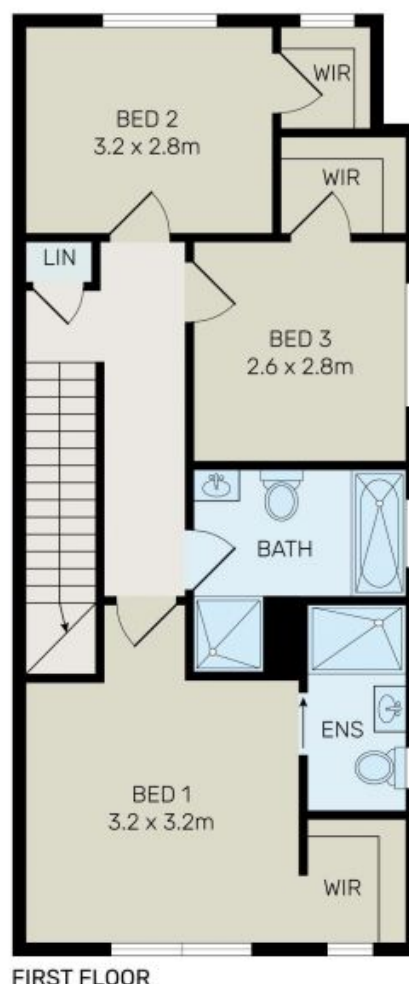
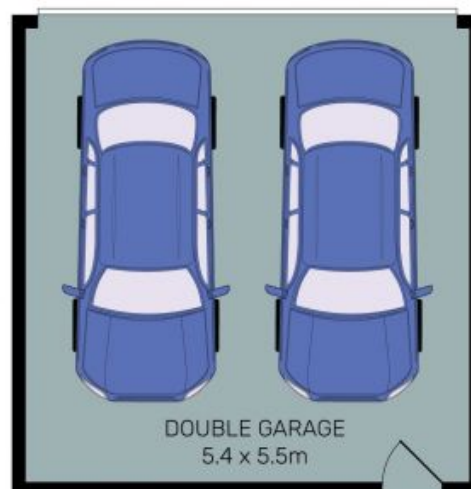
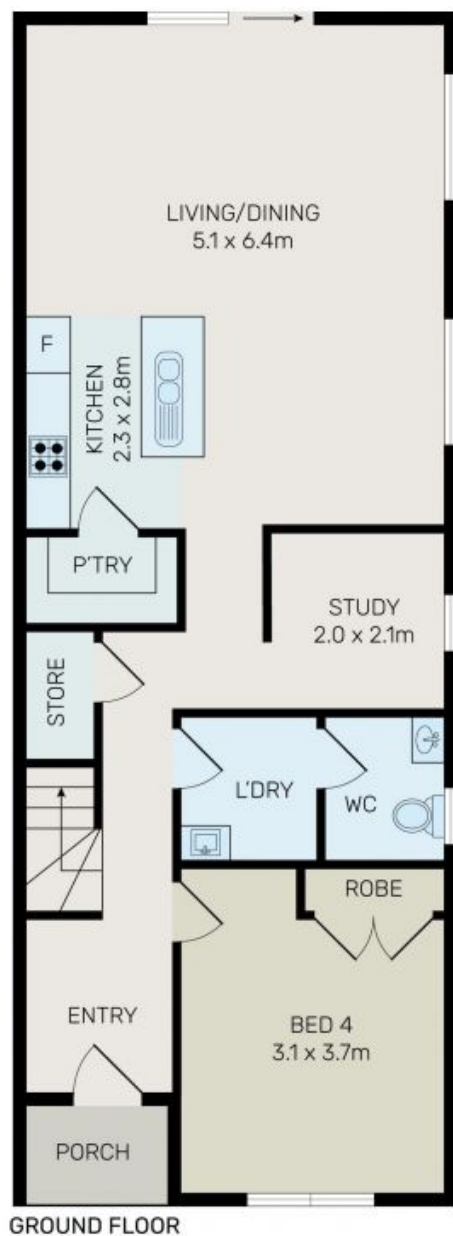
Open plan kitchen combine with living and dining area plus detached double lock up garage with remote control.

**Michael Chen**

0430709996

**Alex Bi**

0401 022 086



All information contained herein is gathered from all sources we believe to be reliable. However we cannot guarantee its accuracy and interested parties should rely on their own enquiries.



# 86 Eather Avenue, Bardia