

1040/11 Canning Street Lidcombe, NSW

 2  2  1

Modern Living in a Great Location

OTTO Property presents this near new spacious two bedrooms two bathrooms one car parking open-plan apartment, offering premium lifestyle and convenience. Perfectly positioned next to Sydney Olympic Park's world-class sporting, dining, and retail venues, you'll be impressed by the space, sophistication, and style on offer.

Showcasing a spacious dining and living area which connects to your balcony, and both of bedrooms open out to a balcony. The kitchen uses premium stainless steel kitchen appliances and gas cooking.

Features:

- Two large bedrooms, one of them open out to a balcony
- Master bedroom with ensuite
- Reverse cycle A/C
- 3000sqm podium garden with outdoor swimming pool/spa, kids playground, Indoor Gym/Sauna,

Inspect:

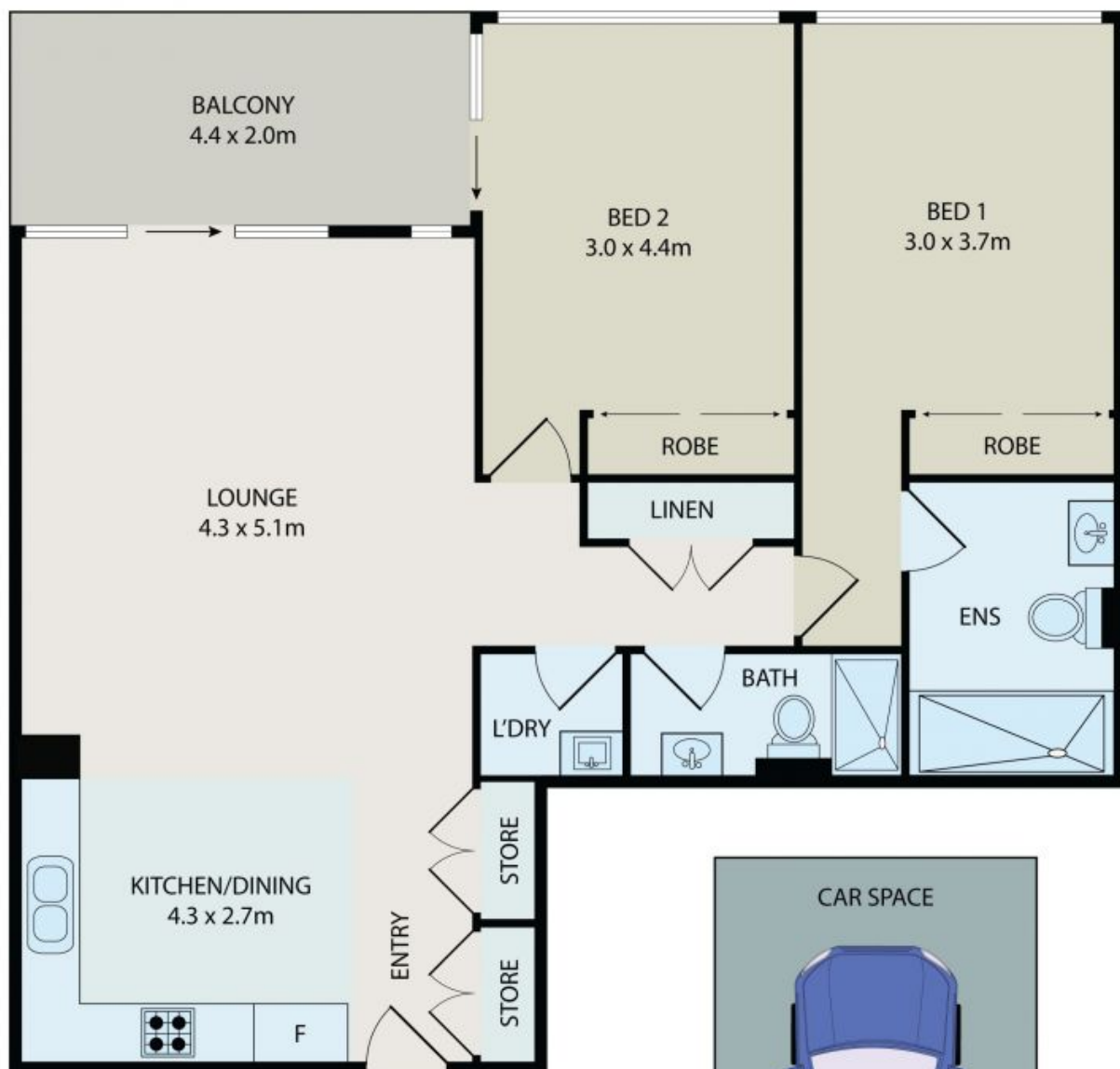
Saturday, 18th May 2024 10:00 - 10:30

Alex Bi

0401 022 086

Daisy Peng

0426 024 148



All information contained herein is gathered from all sources we believe to be reliable. However we cannot guarantee its accuracy and interested parties should rely on their own enquiries.



OTTO
PROPERTY



1040/11 Canning Street, Lidcombe